

Confirm For Correctness
& Fax Back Within 24 Hrs.
To (204) 388-6710
Your Signature: _____

***SEE NOTES ON SHEET 04**



SPECTISTM
MOULDERS INC.
Custom Polyurethane Products

PEMBINA,
NORTH DAKOTA
58271-0479
11 C A

100 CEDAR DRIVE
NIVERVILLE, MANITOBA
CANADA R0A 1E0

PHONE: 800-685-9981
FAX: 204-388-6710

GENERAL NOTES:

1. ALL PRODUCTS ARE DRAWN FOR PRESENTATION PURPOSES ONLY. IMAGE MAY VARY SLIGHTLY FROM ACTUAL PART
2. DRAWING INTENT IS TO INDICATE GENERAL ARRANGEMENT. DESIGN AND INTENT OF WORK IS PARTLY DIAGRAMMATIC.
3. SPECTIS RESERVES THE RIGHT TO CHANGE ANY PRODUCT DESIGN WITHOUT NOTICE.

CUSTOMER NAME:

STANDARD PRODUCT

PART:

PAADS2231

REFERENCE:

LOUVER ACCESS DOOR

SHEET:

01 OF 04

DRAWN BY:

JB

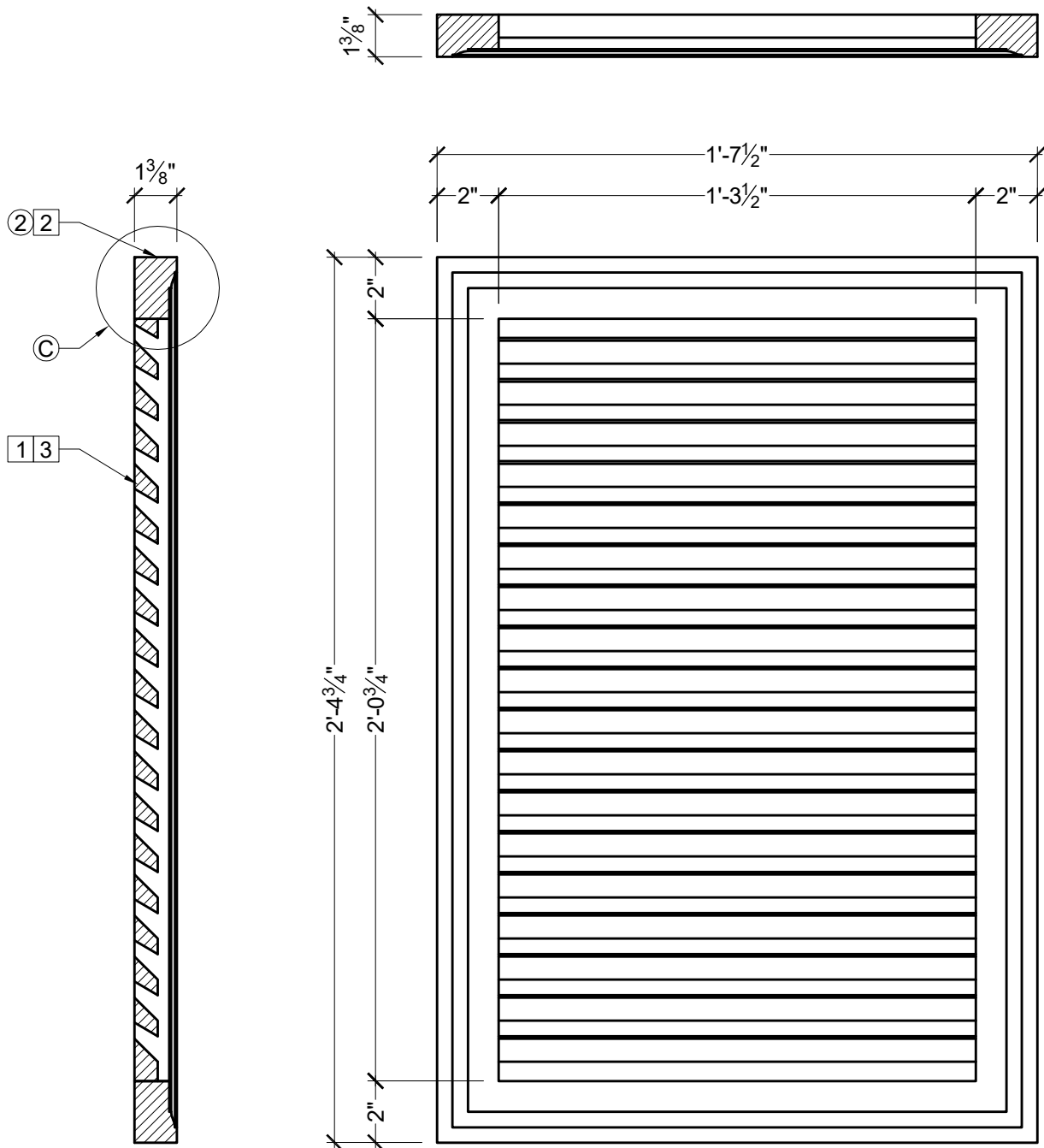
DATE:

04/25/14

SCALE:

$\frac{3}{16} = 1"$

REV:



Confirm For Correctness
& Fax Back Within 24 Hrs.
To (204) 388-6710
Your Signature: _____

***SEE NOTES ON SHEET 04**



SPECTIS™
MOULDERS INC.
Custom Polyurethane Products

PEMBINA,
NORTH DAKOTA
58271-0479

100 CEDAR DRIVE
NIVERVILLE, MANITOBA
CANADA R0A 1E0

PHONE: 800-685-9981
FAX: 204-388-6710

GENERAL NOTES:

1. ALL PRODUCTS ARE DRAWN FOR PRESENTATION PURPOSES ONLY. IMAGE MAY VARY SLIGHTLY FROM ACTUAL PART
2. DRAWING INTENT IS TO INDICATE GENERAL ARRANGEMENT. DESIGN AND INTENT OF WORK IS PARTLY DIAGRAMMATIC.
3. SPECTIS RESERVES THE RIGHT TO CHANGE ANY PRODUCT DESIGN WITHOUT NOTICE.

CUSTOMER NAME:

STANDARD PRODUCT

PART:

PAADS2231

REFERENCE:

LOUVER ACCESS DOOR

SHEET:

02 OF 04

DRAWN BY:

JB

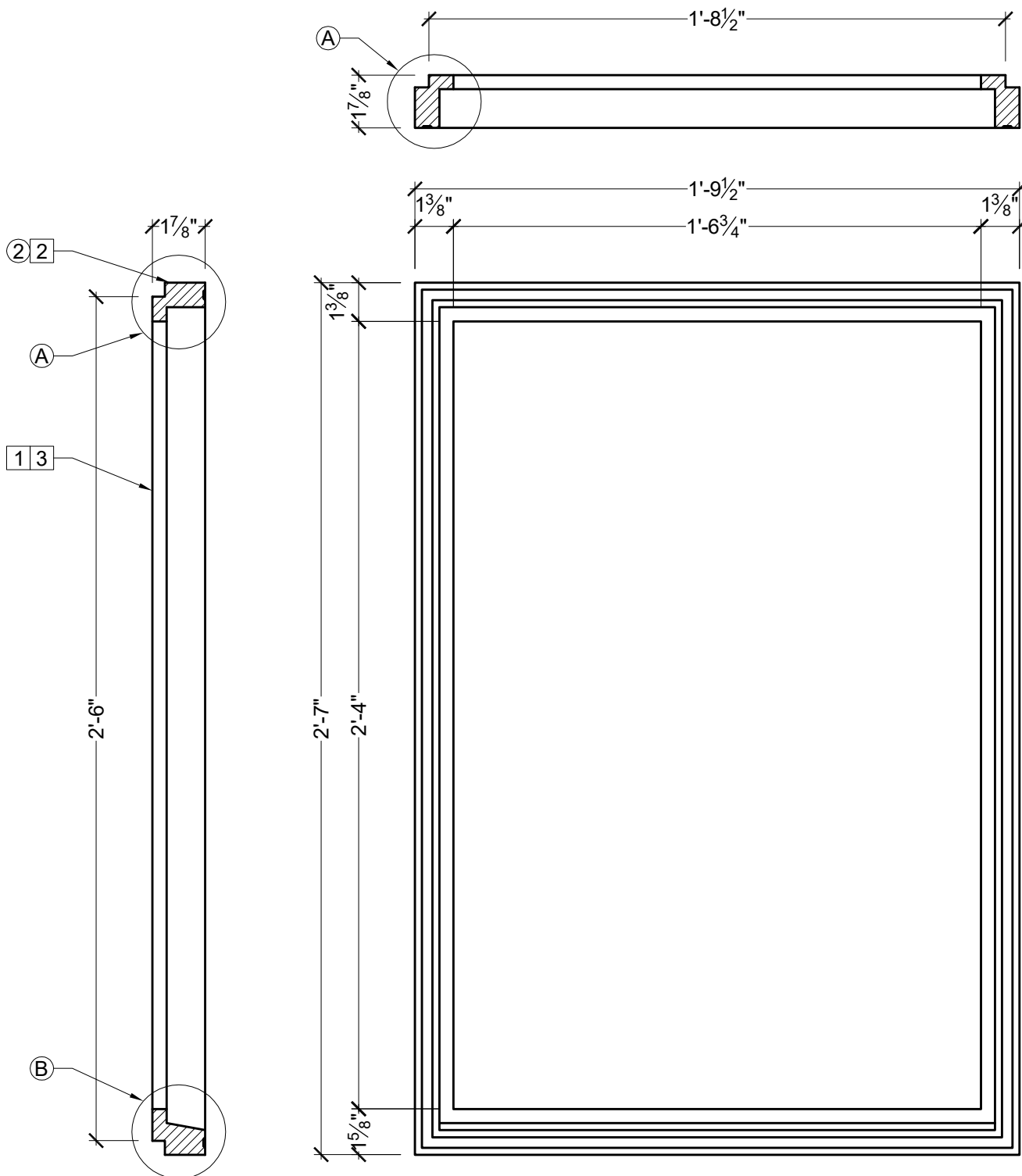
DATE:

04/25/14

SCALE:

$\frac{3}{16} = 1"$

REV:



Confirm For Correctness
& Fax Back Within 24 Hrs.
To (204) 388-6710
Your Signature: _____

***SEE NOTES ON SHEET 04**



SPECTIS™
MOULDERS INC.
Custom Polyurethane Products

PEMBINA,
NORTH DAKOTA
58271-0479

100 CEDAR DRIVE
NIVERVILLE, MANITOBA
CANADA R0A 1E0

PHONE: 800-685-9981
FAX: 204-388-6710

GENERAL NOTES:

1. ALL PRODUCTS ARE DRAWN FOR PRESENTATION PURPOSES ONLY. IMAGE MAY VARY SLIGHTLY FROM ACTUAL PART
2. DRAWING INTENT IS TO INDICATE GENERAL ARRANGEMENT. DESIGN AND INTENT OF WORK IS PARTLY DIAGRAMMATIC.
3. SPECTIS RESERVES THE RIGHT TO CHANGE ANY PRODUCT DESIGN WITHOUT NOTICE.

CUSTOMER NAME:

STANDARD PRODUCT

PART:

PAADS2231

REFERENCE:

LOUVER ACCESS DOOR

SHEET:

03 OF 04

DRAWN BY:

JB

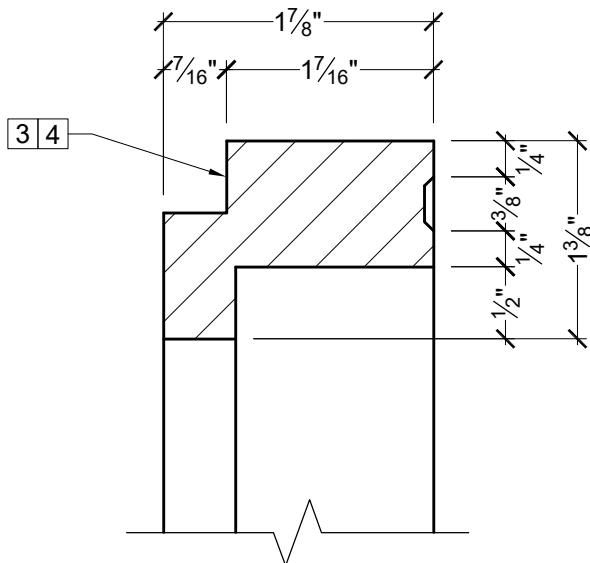
DATE:

04/25/14

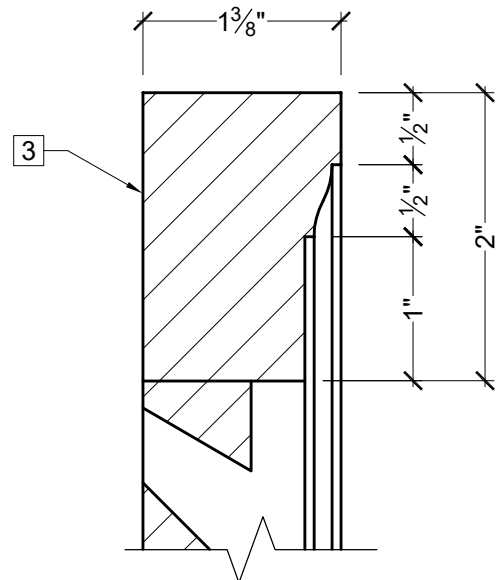
SCALE:

3/16" = 1"

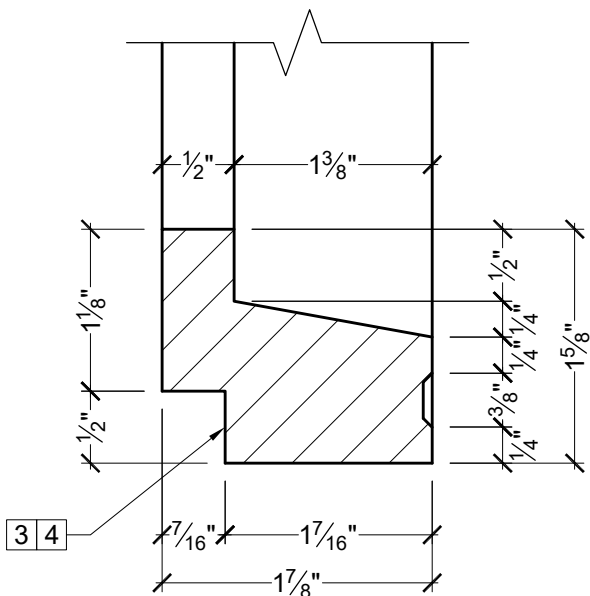
REV:



A FRAME PROFILE



C LOUVER PROFILE



B FRAME BOTTOM SILL PROFILE

Confirm For Correctness
& Fax Back Within 24 Hrs.
To (204) 388-6710
Your Signature: _____

BILL OF MATERIAL

① PAADS2231 - LOUVER ACCESS
DOOR LEFT SWING

② LORT MADE OF POLYURETHANE

③ FRAME MADE OF POLYURETHANE

④ LATCH AND HINGE HARDWARE

OPERATIONS

① SCREEN APPLIED TO BACK OF
LOUVER

② WHITE PAINT FINISH

③ BACK UNFINISHED

④ APPLIED RABBET

GENERAL NOTES:

-ALL CUSTOM MANUFACTURED
AND/OR MODIFIED STANDARD
PRODUCTS ARE
NON-RETURNABLE

-PL PREMIUM ADHESIVE MUST BE
USED ON ALL BEDDING/BUTT
JOINTS



SPECTIS™
MOULDERS INC.
Custom Polyurethane Products

PEMBINA,
NORTH DAKOTA
58271-0479

100 CEDAR DRIVE
NIVERVILLE, MANITOBA
CANADA R0A 1E0

PHONE: 800-685-9981
FAX: 204-388-6710

GENERAL NOTES:

1. ALL PRODUCTS ARE DRAWN FOR
PRESENTATION PURPOSES ONLY.
IMAGE MAY VARY SLIGHTLY FROM
ACTUAL PART

2. DRAWING INTENT IS TO INDICATE
GENERAL ARRANGEMENT. DESIGN
AND INTENT OF WORK IS PARTLY
DIAGRAMMATIC.

3. SPECTIS RESERVES THE RIGHT
TO CHANGE ANY PRODUCT DESIGN
WITHOUT NOTICE.

CUSTOMER NAME:

STANDARD PRODUCT

PART:

PAADS2231

REFERENCE:

LOUVER ACCESS DOOR

SHEET:

04 OF 04

DRAWN BY:

JB

DATE:

04/25/14

SCALE:

3/4 = 1"

REV: