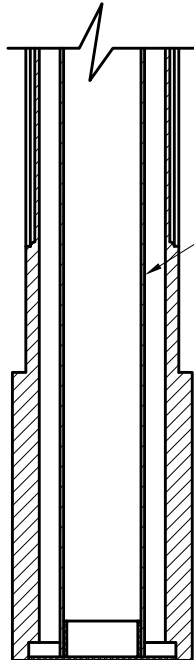
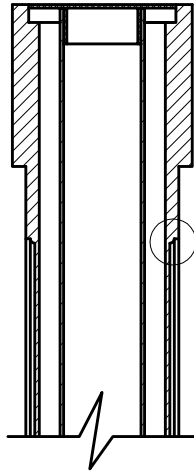
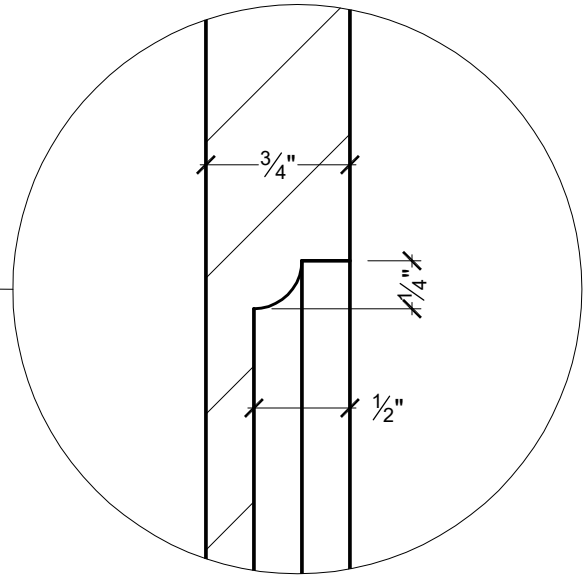


FRONT VIEW



A SECTION VIEW



B RECESS DETAIL
SCALE: 1" = 1"

$4\frac{1}{2}"\phi$ OR $2\frac{7}{8}"\phi$ METAL PIPE

GENERAL NOTES:

- SPECTIS ADHESIVE MUST BE USED ON ALL BEDDING/BUTT JOINTS
- MOULDED IN 4 PIECES AND SHIPPED AS 1



SPECTIS MOULDERS INC.

P.O. BOX 970
100 CEDAR DRIVE
NIVERVILLE, MANITOBA
CANADA R0A 1E0

PHONE: 204-388-6700
PHONE: 800-685-9981
FAX: 204-388-6710

BOX 479
PEMBINA,
NORTH DAKOTA
58271-0479
U.S.A.

GENERAL NOTES:

1. ALL PRODUCTS ARE DRAWN FOR PRESENTATION PURPOSES, ONLY IMAGE MAY VARY SLIGHTLY FROM ACTUAL PART
2. DRAWING INTENT IS TO INDICATE GENERAL ARRANGEMENT, DESIGN AND INTENT OF WORK IS PARTLY DIAGRAMATIC.
3. SPECTIS RESERVES THE RIGHT TO CHANGE ANY PRODUCT DESIGN WITHOUT NOTICE.

© 2006, Spectis Moulders Inc. All rights reserved. This document may not be used or duplicate without prior consent.

CUSTOMER NAME:			PART:
STANDARD PRODUCT			RBCS-10108
REFERENCE:			SHEET:
COLUMN			01 OF 01
DRAWN BY:	DATE:	SCALE:	REV:
JRB/JK	07/04/07	$\frac{3}{32}" = 1"$	